

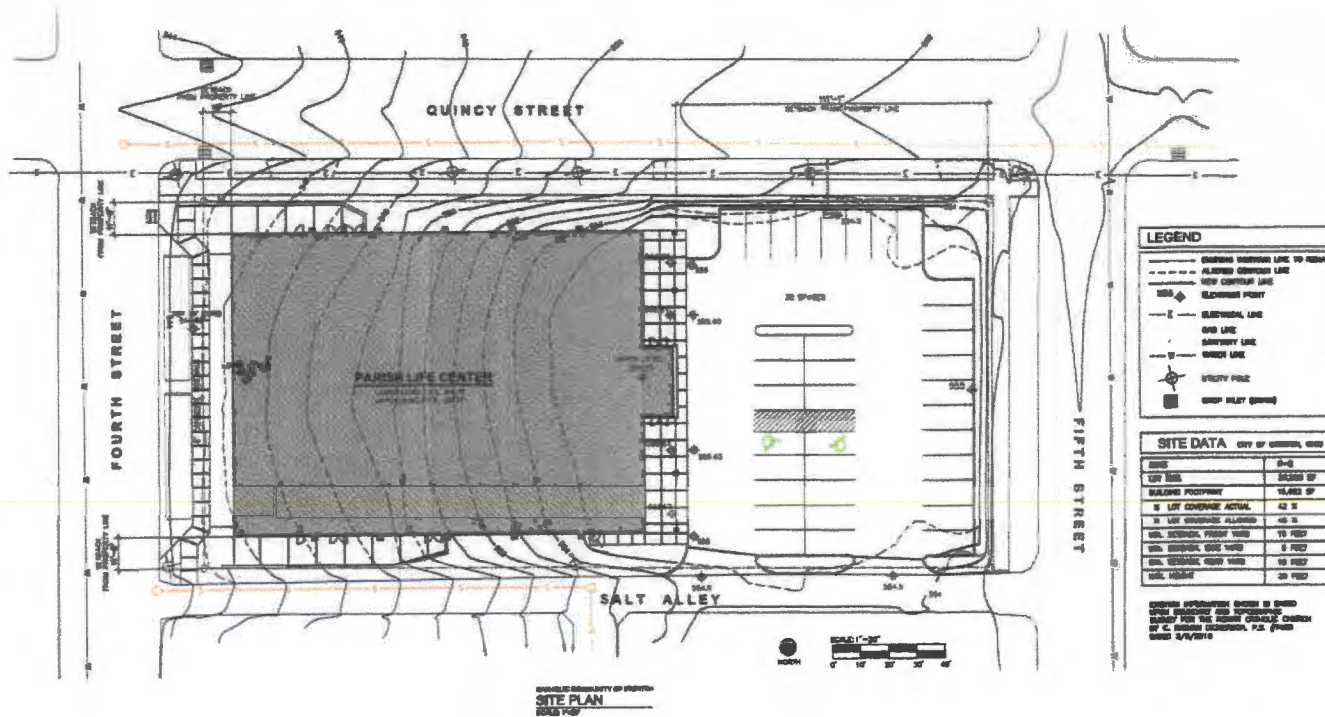
Exhibit 6



PARISH LIFE CENTER
for the
Catholic Community of Ironton, OH



Exhibit 6 continued



PARISH LIFE CENTER

FOR THE
CATHOLIC COMMUNITY
OF
IRONTON
205 SOUTH 6TH STREET
IRONTON, OH

Edward Tucker
ARCHITECTS, INC.
John M. Tucker
Huron, Ohio 44825-1111
419.324.1111
www.edwardtucker.com

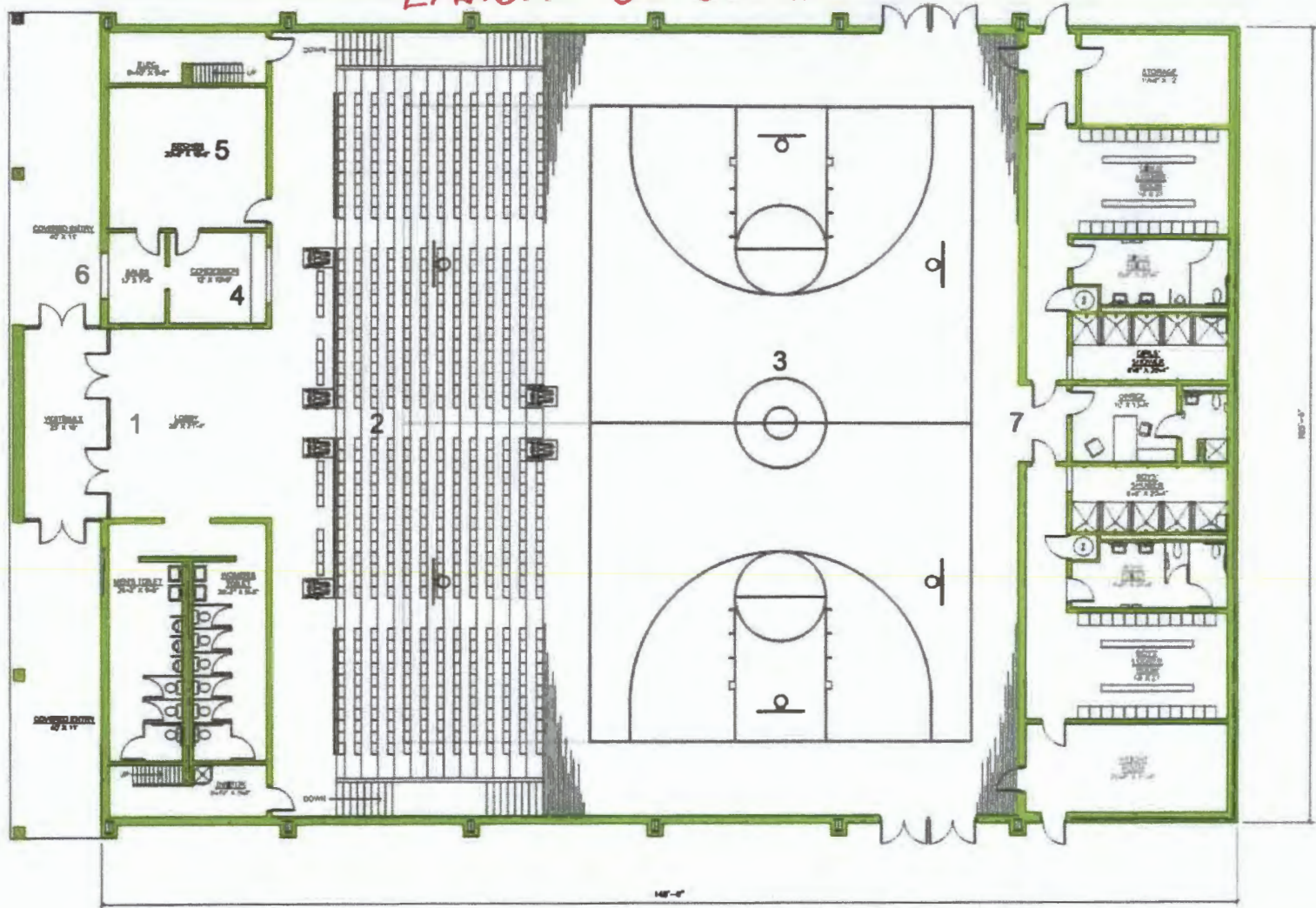
PRELIMINARY
ISSUED FOR REVIEW

SITE PLAN

PROJECT NO. 200808
DATE APR 4, 2017
SCALE AS NOTED

C-1.1

Exhibit 6 continued



ATHLETIC EVENT CONFIGURATION - UPPER & LOWER LEVELS

LEGEND OF FEATURES

- 1 Main Entry at S. 5th Street / Upper Level
- 2 Bleacher seating for 650 persons
- 3 High School regulation 84' x 50' basketball court
- 4 Concession Sales
- 5 Kitchen sized for other events (I.e. Charity Fair)
- 6 Serving window to outdoor events (I.e. Charity Fair)
- 7 Court & Lockers etc. at S. 4th Street / Lower Level

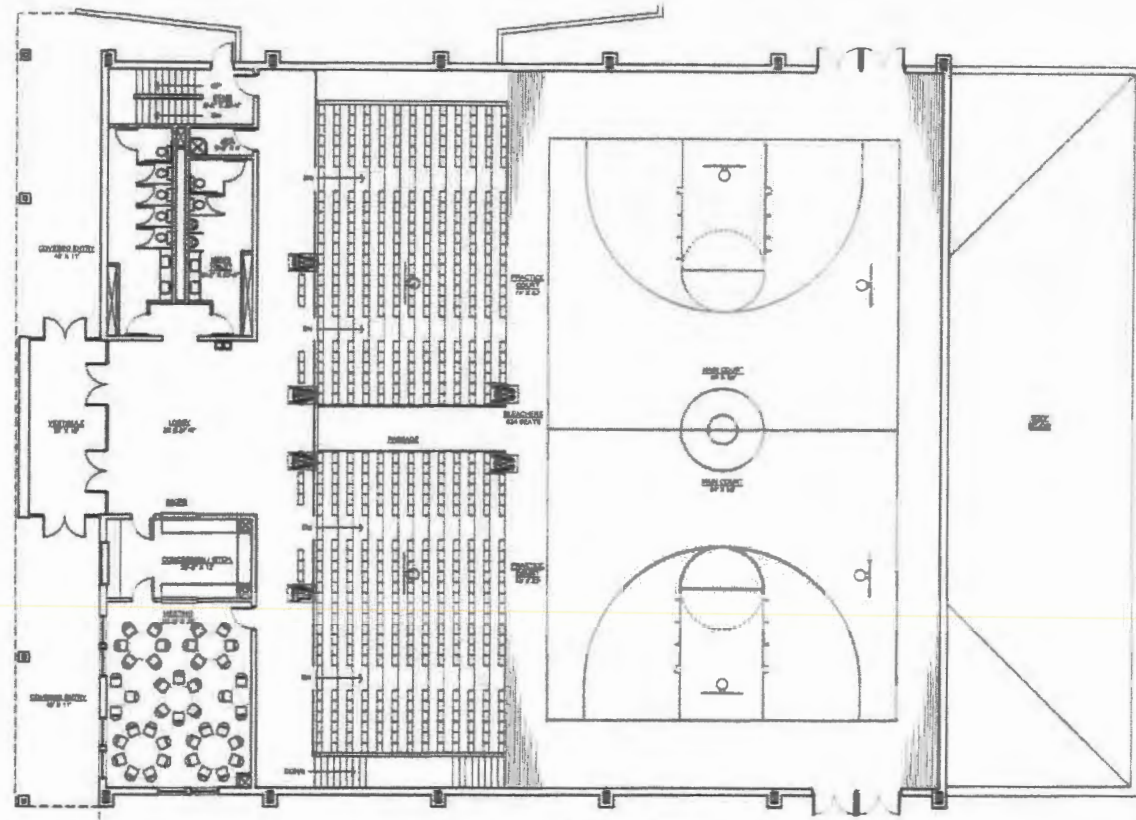
DATE: MAY 12, 2016
ETA PROJECT 2014-0802

Edward Tucker ARCHITECTS, INC.
14711 South Avenue
Huntington, West Virginia 25701
724.697.4900 telephone
724.697.4900 fax

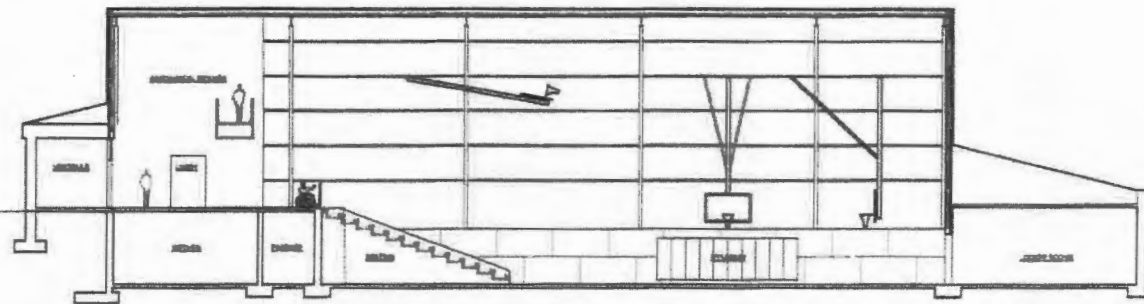
MASTER PLAN FOR THE CATHOLIC COMMUNITY IRONTON

CATHOLIC COMMUNITY C

Exhibit 6 continued



1 UPPER LEVEL FLOOR PLAN
A2 1/8" = 1'-0" 3,810 SF



1 BUILDING SECTION
A-A 1/8" = 1'-0"

PARISH LIFE CENTER

FOR THE
CATHOLIC COMMUNITY OF
IRONTON
505 SOUTH 8TH STREET
IRONTON, OH

Edward Tucker
ARCHITECTS, INC.
1200 S.W. 22ND AVENUE
MIAMI, FL 33135
TEL: 305-358-1100
FAX: 305-358-1101

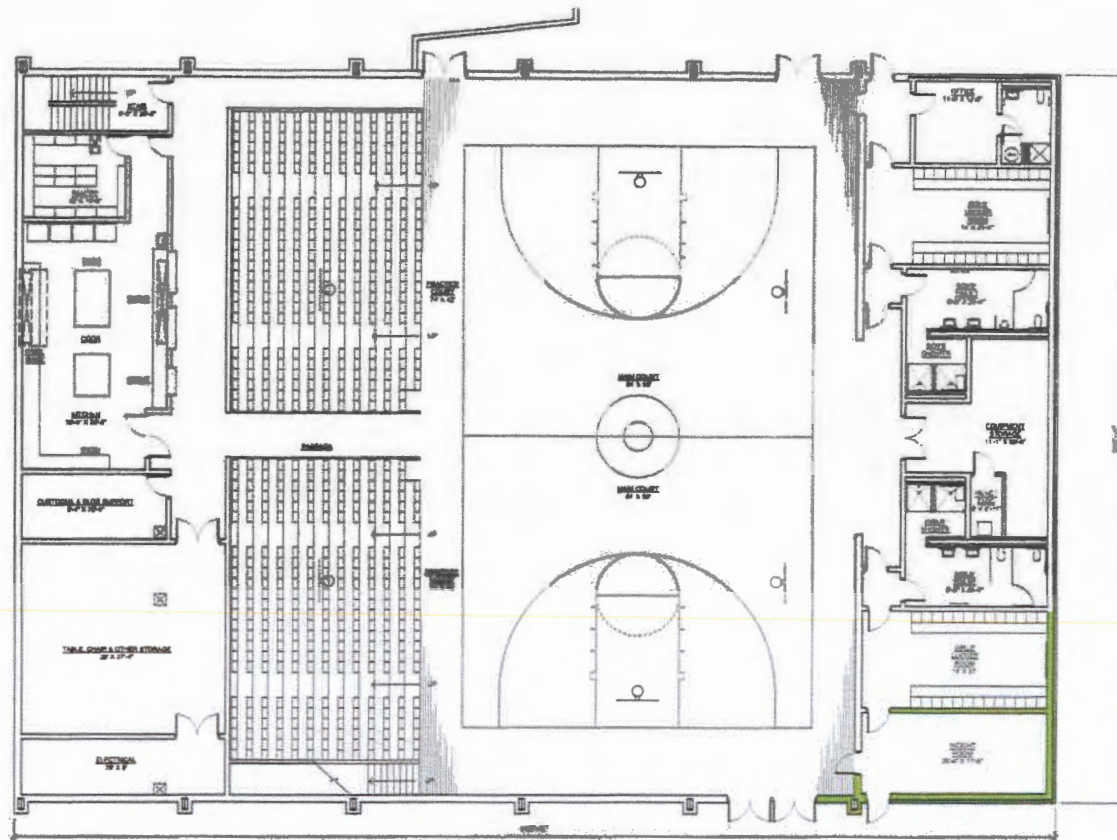
PRELIMINARY
ISSUED FOR REVIEW

FLOOR PLANS &
BUILDING SECTION

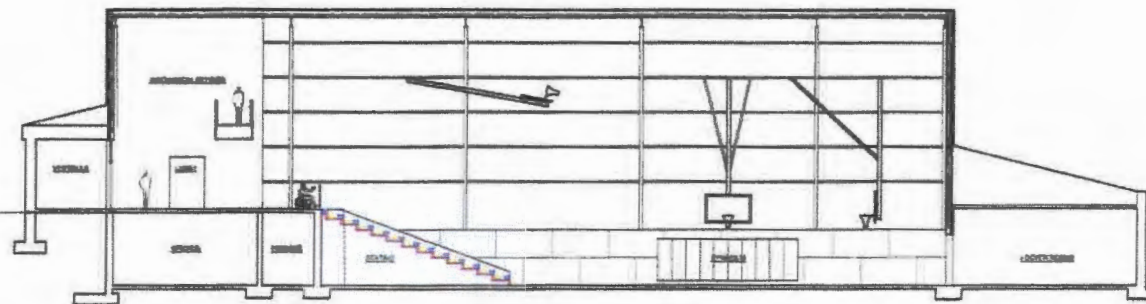
PROJECT NO. 2000-001
DATE: 05/06/00
SCALE: AS SHOWN

A2

Exhibit 6 Continued.



1 LOWER LEVEL FLOOR PLAN
 A1 1/8" = 1'-0" 15,840 SF



BUILDING SECTION
 1/8" = 1'-0"

PARISH LIFE CENTER
 FOR THE
 CATHOLIC COMMUNITY
 OF
 IRONTON
 905 SOUTH 8TH STREET
 IRONTON, OH

Edward Tucker
 ARCHITECTS, INC.
 13400 N. 15th
 Suite 2000, Overland Park, KS
 66204-3000
 913-641-1111

PRELIMINARY
 ISSUED FOR REVIEW

FLOOR PLANS &
 BUILDING
 SECTION

PROJECT NO. 200-0001
 DATE: APR 4 2011
 SCALE: AS SHOWN

A1